



# BLADE

PET FELT BAFFLES

# BLADE

## PET FELT BAFFLES

Slice through the noise with Blade PET felt baffles. These beautifully constructed PET felt baffles feature an extrusion mounted to the top edge to accommodate various installation conditions and achieve a sleek look with minimal effort, and maximum acoustic performance.

- Pre-Engineered systems available for customized sizes and quick delivery
- Top mounted extrusion keeps baffles straight and aligned
- Available in a wide variety of colors and wood grain prints
- 60% Post-Consumer Recycled Content
- NRC rating of 0.80

## SPECS

Material Composition: 60% Post-Consumer Recycled PET Felt

Blade Thickness: 1/2", 1", 2"

Blade Height: 4" to 48"

Blade Length: 2' to 10'

Installation Method: Threaded Rod, Hanging Wire, T-Grid, Unistrut, Direct Attach

Fire Rating: Class A Fire Rated per ASTM E84

VOC Emissions: Passes CDPH Standard v1.2

NRC Rating: 0.80

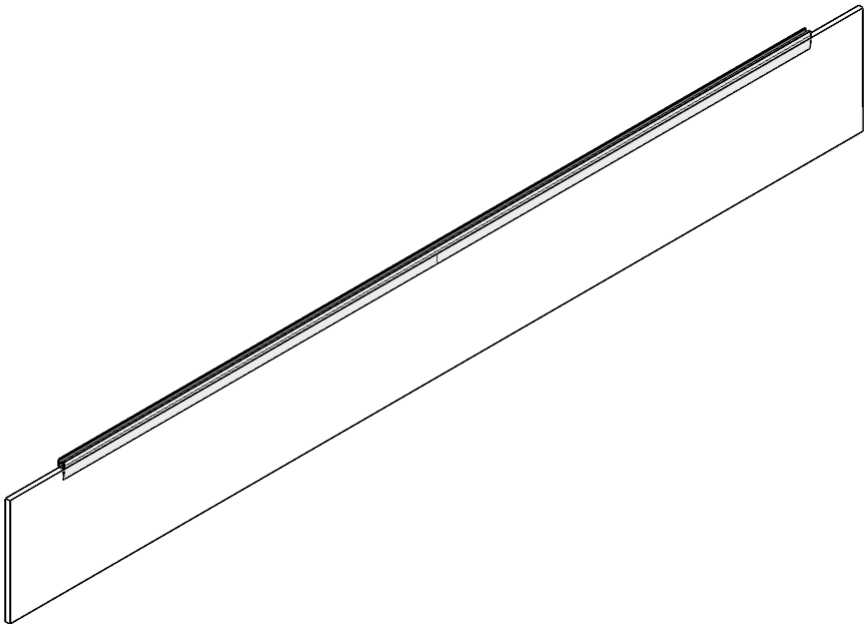


# DETAILS

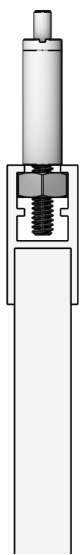
## BLADE

---

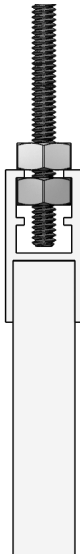
BLADE can be customized in height, and length to achieve the perfect size for your space. BLADE can be easily assembled with an extrusion that can accomodate typical installation methods.



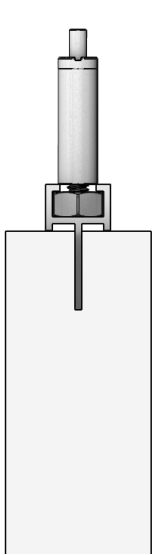
TOP VIEW - 1/2" BLADE



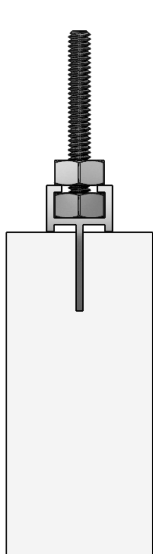
CABLE ATTACHMENT  
- 1/2" BLADE



THREADED ROD  
ATTACHMENT - 1/2"  
BLADE



CABLE ATTACHMENT  
- 1" AND 2" BLADE



THREADED ROD  
ATTACHMENT - 1"  
AND 2" BLADE

## ESSENTIAL COLORS



## LUXE COLORS



## WOOD GRAIN TEXTURES



*Due to variance in monitor and print settings, please verify PET felt color by requesting a material sample.*