

SLATTA Direct Attach Wall Installation

ATTENTION: If you have additional questions after reviewal of this manual please contact your local Material Logiq representative or a Material Logiq professional at our headquarters (952)448-5300

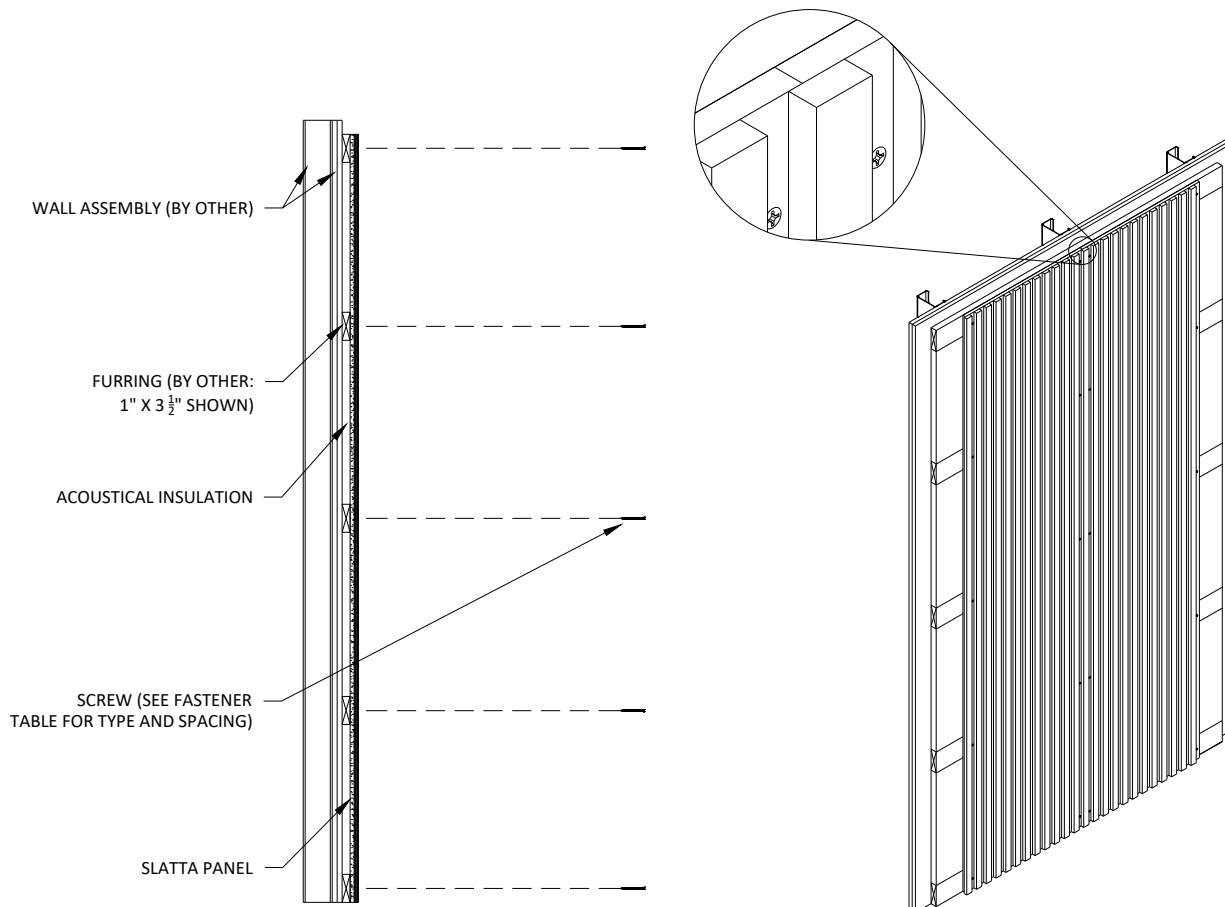
MATERIAL LOGIQ MANUFACTURES PRODUCTS THAT MUST BE HANDLED WITH CARE. PRODUCTS SHOULD ONLY BE INSTALLED BY EXPERIENCED INSTALLERS.

RECEIVING

Prior to unpacking, check package for any obvious shipping damage. If no evidence of damage is present, move package to a dry/controlled area and inspect it for dents, breakage, or any lesser-noticeable damage that may affect enclosed panels. If damage has been identified, record it/photograph it, and open to inspect for concealed damage. If damage was transferred to the product, document/photograph the issues.

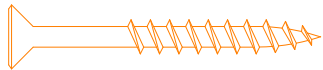
INSTALLATION

Material Logiq Panels are designed to be installed on furring, existing structure, or plywood of sufficient thickness to support the product. Furring must be spaced 24" OC max. Plan furring layout such that panel joints land on furring. Once furring and optional acoustical backer are properly installed, panels may be mechanically fastened to furring using Material Logiq recommended screws (by other) 24" O.C. max or 12" max in high traffic areas.

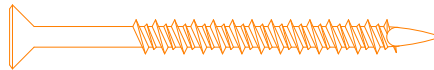


SCREW TYPE CHART			
PANEL THICKNESS	SUBSTRATE	RECOMMENDED SCREW TYPE	RECOMMENDED SCREW LENGTH
1"	HAT CHANNEL OR THIN METAL	SELF-TAPPING	2"
1-3/8"	HAT CHANNEL OR THIN METAL	SELF-TAPPING	2-1/4"
2"	HAT CHANNEL OR THIN METAL	SELF-TAPPING	3"
1"	WALL BOARD OR WOOD FURRING	DRYWALL SCREW	1-5/8"
1-3/8"	WALL BOARD OR WOOD FURRING	DRYWALL SCREW	2-1/4"
2"	WALL BOARD OR WOOD FURRING	DRYWALL SCREW	3"
1"	CONCRETE	TAPCON	2-1/4"
1-3/8"	CONCRETE	TAPCON	2-3/4"
2"	CONCRETE	TAPCON	3-1/4"

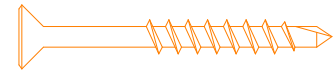
SCREW SPACING CHART		
APPLICATION	MINIMUM O.C. SPACING	MINIMUM SCREW DISTANCE FROM EDGE OF PANEL
CEILING	12"	3/4"
WALL	24"	3/4"
WALL: HIGH TRAFFIC	12"	3/4"



#6 SHARP POINT DRYWALL SCREW
RECOMMENDED FOR WOOD APPLICATION



#6 CMU SCREW RECOMMENDED FOR
MASONRY APPLICATION



#6 SELF TAPPING SCREW
RECOMMENDED FOR METAL
APPLICATIONS)